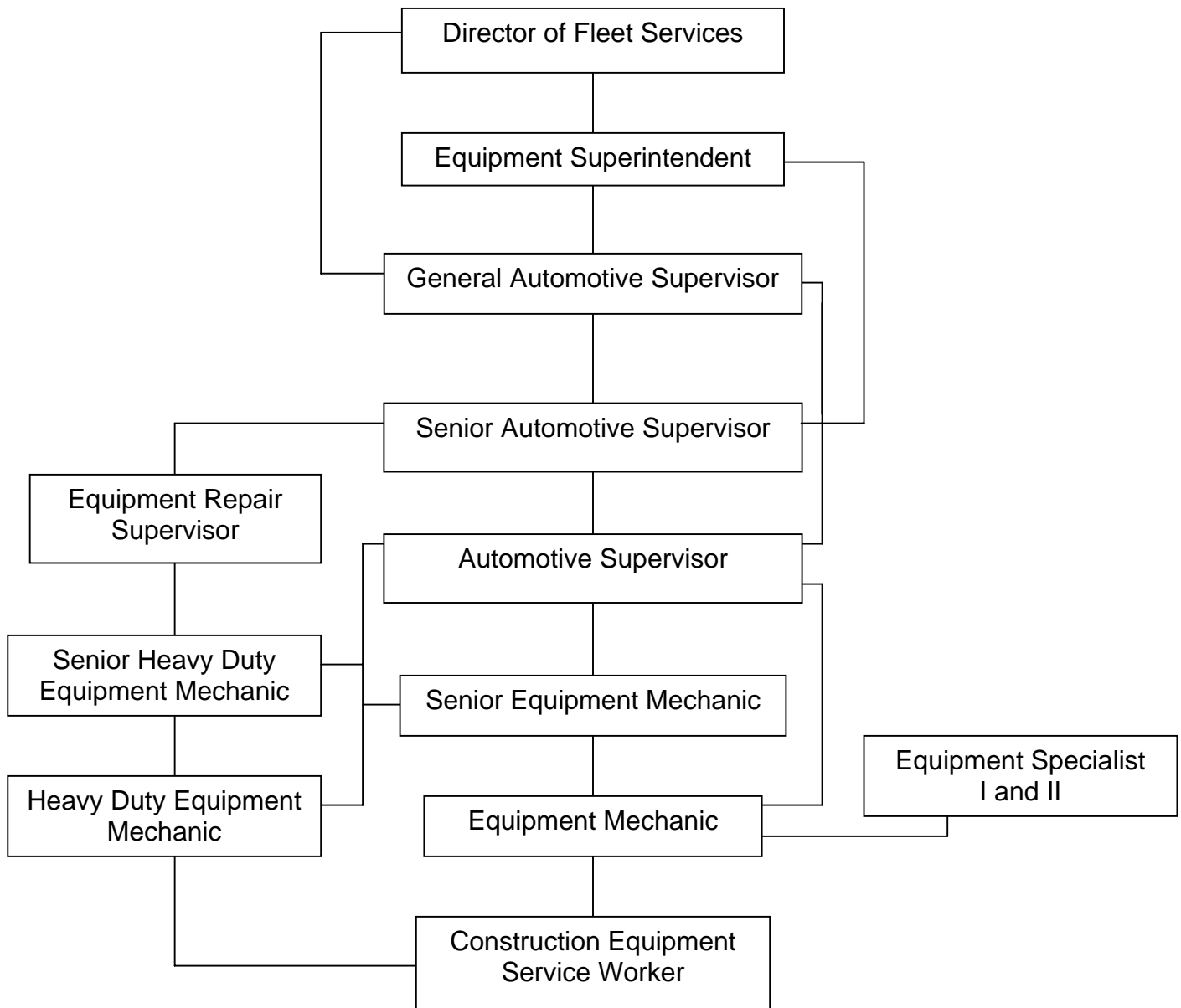


**CITY OF LOS ANGELES
PERSONNEL DEPARTMENT**

CAREER OPPORTUNITIES FOR CONSTRUCTION EQUIPMENT SERVICE WORKER

This information is being given to you to describe potential opportunities as a Construction Equipment Service Worker. The career ladders that Construction Equipment Service Workers most commonly enter into are diagrammed below. The typical duties and requirements for the first promotional level of these career ladders are also described. However, these may be subject to change. You may review class specifications and some job bulletins through the Personnel Department's website at www.lacity.org/PER or you may request a copy of this information from the Personnel Department, Room 100. We encourage you to examine the options open to you and to prepare yourself for the promotions for which you qualify.



DUTIES AND REQUIREMENTS OF FIRST PROMOTIONAL LEVEL

Equipment Mechanic (Automotive Mechanic)

Duties: Does skilled mechanical work in the maintenance and repair of automotive transportation equipment and inspects such equipment to determine needed repairs.

Requirements:

1. Completion of a recognized apprenticeship as an automotive mechanic and submission of an apprenticeship certificate; or
2. Four years of full-time paid experience in automotive mechanic work; or
3. Satisfactory completion of a two-year community college-level program in auto or truck mechanics in a trade or technical school and two years of full-time paid experience in automotive mechanic work; or
4. Satisfactory completion of an Equipment Mechanic Training Program while employed as a Craft Trainee for a City Department and submission of a certificate of program completion.

Heavy Duty Equipment Mechanic

Duties: Does journey-level work in the maintenance and repair of construction, road maintenance, or firefighting equipment; or builds and installs or modifies equipment for special purposes.

Requirements:

1. Completion of a recognized apprenticeship as a heavy duty equipment mechanic; or
2. Two years of full-time paid experience as a journey-level equipment mechanic which includes the repair of a variety of heavy duty gasoline and diesel powered vehicles or off road construction equipment; or
3. Five years of full-time paid experience in equipment maintenance and repair, of which two years must have been in the maintenance and repair of heavy duty gasoline and diesel powered vehicles or off road construction equipment.

Note: The above information does not replace class specifications and examination bulletins.

PREPARING YOURSELF FOR PROMOTION

1. Broaden your work experience by taking advantage of job rotation and transfer opportunities. Take advantage of on-the-job training opportunities relating to your work.
2. Take advantage of formal education opportunities relating to your work.

3. Learn and stay abreast of laws, procedures, policies and practices relating to your career ladder.
4. Carefully review examination bulletins and class specifications for promotional classes to determine the kinds of skills, knowledges and abilities you need to develop for promotion.
5. Request for Notification cards may be completed in Room 100 of the Personnel Building (847-9240) to notify you by mail when a specific examination is open for filing. Familiarize yourself with the areas in your work location where weekly job bulletins are posted.
6. Employees may obtain career counseling from the Personnel Department's Employee Development Section, (213) 847-9800, in Room 380, Personnel Building.

(Rev. 7/06)
(D-2:Career Ladders A-D)