

COMMUNITY NEWS

Tuesday, February 27, 2007

WWW.CD12.ORG

Greig Smith Council District 12



LOS ANGELES CITY COUNCILMAN GREIG SMITH

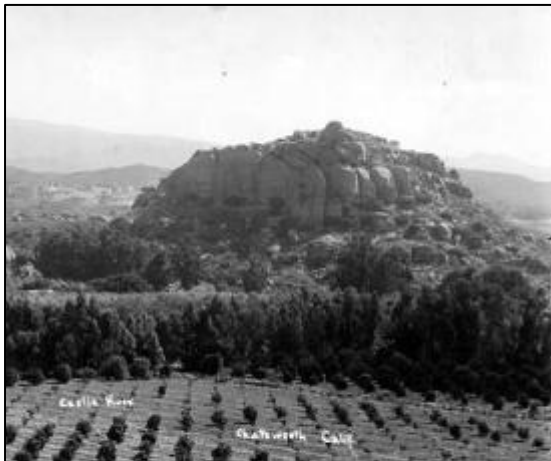
Stoney Point Land Acquisition Well On Its Way!

The Board of the Department of Recreation and Parks this week approved our proposal to acquire five acres of land adjacent to Stoney Point Park in Chatsworth. This was a crucial step in our effort to expand this beautiful, unique nature area in our community and preserve it.

We are working to acquire two parcels adjacent to Stoney Point that would extend the southern border of the park by a total of 5.05 acres. It would provide equestrian access to the trails along the northern border of our City, expanding the opportunities for the community to enjoy the unique stone formations, and wooded hillsides of this natural habitat.



Our expansion of Stoney Point will increase and preserve natural and equestrian space in our community.



Stoney Point was designated an historic-cultural monument in 1974. This picture, from the CSUN's San Fernando Valley History Digital Library, is from 1935.

It is part of our ongoing commitment to preserve and promote the strong equestrian heritage of the community of Chatsworth. We will maintain equestrian facilities on the land to preserve the equestrian character of the neighborhood, and protect it from being developed.

Our special thanks go out to Chatsworth Neighborhood Council for contributing \$20,000 of its funds toward the \$2.5 million acquisition. Our office put together funding from six different sources for the acquisition.