



ORGANIZATIONAL CHART & TELEPHONE DIRECTORY

This directory is designed to:

1. Give users direct access to the Department's top level management and supervisory personnel, and
2. To see where the managers and supervisors fit into the Department's chain-of-command structure.

FOR AUTOMATED INSPECTION REQUESTS ONLY
YOU MAY CALL TOLL FREE FROM ANYWHERE
IN LOS ANGELES COUNTY:

1-888-LA-4-BUILD

OR

OUTSIDE LOS ANGELES COUNTY

213-482-0000

FOR ALL OTHER SERVICES OR INFORMATION FROM WITHIN
THE CITY OF LOS ANGELES

3-1-1

OR

OUTSIDE LOS ANGELES CITY

1-866-4-LA-CITY

For more information regarding the Los Angeles Department of Building and Safety, please visit www.ladbs.org.

OCTOBER 16, 2009



LADBS ADMINISTRATIVE/HEADQUARTER OFFICES
201 NORTH FIGUEROA STREET, SUITE 1000
LOS ANGELES, CALIFORNIA 90012

PERMIT ISSUING/CONSTRUCTION SERVICES/INSPECTION OFFICES

- **METRO CONSTRUCTION SERVICES CENTER**
201 N. Figueroa Street
Records Research and Express Permits - 1st Floor
Plan Check - 4th Floor
- **VAN NUYS CONSTRUCTION SERVICES CENTER**
6262 Van Nuys Blvd., 2nd Floor
Van Nuys, CA 91401
- **WEST LOS ANGELES CONSTRUCTION SERVICES CENTER**
1828 Sawtelle Blvd., 2nd Floor
Los Angeles, CA 90025
- **SAN PEDRO CONSTRUCTION SERVICES CENTER**
638 S. Beacon Street, 2nd Floor
San Pedro, CA 90731
- **SOUTH LOS ANGELES CONSTRUCTION SERVICES CENTER**
8475 S. Vermont Avenue, 2nd Floor
Los Angeles, CA 90044

OTHER INSPECTION AND CODE ENFORCEMENT OFFICES

- 3550 Wilshire Blvd., #1800 & #2010
Los Angeles, CA 90010
- 3982 S. Figueroa Street, #201
Los Angeles, CA 90037
- 2035 Colorado Blvd.
Los Angeles, CA 90041
- 4815 Valley Blvd., Suite F
Los Angeles, CA 90032
- 11620 Wilshire Blvd., #1100
Los Angeles, CA 90025
- 7166 Manchester Avenue, #10B
Los Angeles, CA 90045
- 10221 Compton Avenue, #105
Los Angeles, CA 90002
- 18911 Nordhoff Street, #38A
Northridge, CA 91324
- 19040 Van Owen Street
Reseda, CA 91335
- Van Nuys City Hall
14410 Sylvan Street
Van Nuys, CA 91411
- 2319 Dorris Place (Test Lab)
Los Angeles, CA 90031

TELEPHONE DIRECTORY INDEX

DEPARTMENT OF BUILDING & SAFETY

Department and Bureau Management Chart 1

ENGINEERING BUREAU

Engineering Plan Check Chart 2
Structural Engineering Chart 2
 Disabled Access Chart 2
Electrical Engineering Chart 2
Mechanical Engineering Chart 2
WLA Office Chart 2
 San Pedro District Office. Chart 2
LADBS Commission Chart 3
Playa Vista. Chart 3
Specialty Engineering (Research) Chart 3
Zoning Chart 3

INSPECTION BUREAU

Van Nuys District Office Chart 4
Grading and Commercial Inspection. Chart 4
WLA Admin & Residential Inspection Chart 4
Van Nuys Plan Check. Chart 5
Grading and Commercial Inspection. Chart 6
 Building Inspection Chart 6
 Plumbing/Heating Fire Sprinkler Inspection Chart 6
 Electrical Inspection Chart 6
 Elevator/Pressure Vessel Chart 6
Grading Inspection/Engineering Chart 7
West L.A. Inspection Office/Residential Inspection. Chart 8

CODE ENFORCEMENT BUREAU

Centralized Specialty Inspection. Chart 9
Citywide Nuisance Abatement Chart 9
 Abandoned Bldg Task Force Chart 9
 Contract Nuisance Abatement Chart 9
 Nuisance Abatement Revocation Chart 9
 Pro-Active Code Enforcement Chart 9
 Problem Property Resolution Chart 9
 Sign Inspection Enforcement Chart 9
 Legal Liaison Chart 9
 Off-Site Sign Program (OSSPIP) Chart 9

CODE ENFORCEMENT BUREAU - cont.

Central Region Inspection Chart 10
 Annual Inspection Monitoring (AIM) Chart 10
 North Region Inspection Chart 10
 South Region Inspection. Chart 10
 Commercial and Single Family
 Complaints & Referral Chart 10
 Citations and Legal Liaison Program Chart 10

RESOURCE MANAGEMENT BUREAU

Subject Specialty Call Group Chart 11
Financial Services Chart 11
Management Information Division Chart 11
 Management Information Systems. Chart 11
 Technical Support Chart 11
 Application Development Chart 11
Training & Emergency Management Division. Chart 11
 Training & Emergency Management. Chart 11
 Emergency Management Chart 11
 Inspection Training Chart 11
Administrative Services Division. Chart 12
 Budget & Administrative Support Chart 12
 Personnel Services Chart 12
 Risk & Records Management. Chart 12

CASE MANAGEMENT, NEIGHBORHOODS AND GOVERNMENT SERVICES

Case Management Unit Chart 13
Neighborhoods and Government Services Unit Chart 13

DEPARTMENT OF BUILDING AND SAFETY

Chart 1

INTERIM GENERAL MANAGER

RAYMOND CHAN, C.E., S.E.
(213) 482-6800
Fax (213) 482-6850

EXECUTIVE OFFICER VACANT

CODE ENGINEER

VICTOR CUEVAS
(213) 482-0409
Fax (213) 482-6850

SPECIAL PROJECTS

JOHN BIEZINS
(213) 482-0446
Fax (213) 482-0017

CASE MANAGEMENT, NEIGHBORHOODS AND GOVERNMENT SERVICES

DAVID LARA
(213) 482-6717
Fax (213) 482-6874
(See Chart 13)

ENGINEERING BUREAU

IFA KASHEFI
(213) 482-0440
Fax (213) 482-0450
Metro/South LA; West LA/San Pedro
(See Charts 2 & 3 for more details)

INSPECTION BUREAU

GRACE HARPER
(213) 482-6707
Fax (213) 482-6753
(See Charts 4, 5, 6, 7 & 8)

CODE ENFORCEMENT BUREAU

HECTOR BUITRAGO
(213) 252-3902
Fax (213) 252-3911
(See Charts 9 & 10)

RESOURCE MANAGEMENT BUREAU

KAREN PENERA
(213) 482-6703
Fax (213) 482-6753
(See Chart 11 & 12)

STRUCTURAL

PLAN CHECK:
Major Structural,
Residential/Commercial,
Disabled Access,
Signs

COUNTER

RESEARCH

EXPRESS PERMITS
LICENSES
RECORDS

SPECIAL
PROJECTS

SPECIALTY

COMMISSION
ZONING

MECHANICAL

PLAN CHECK
COUNTER
MECH. TEST LAB

ELECTRICAL

PLAN CHECK
COUNTER
ELEC. TEST LAB

COMMERCIAL/
GRADING

BUILDING

SPECIALTY

ELECTRICAL

PLUMBING
HEATING &
REFRIGERATION

ELEVATOR &
PRESSURE
VESSELS

RESIDENTIAL

METRO

VAN NUYS

WILSHIRE

WEST L.A./
SAN PEDRO

VAN NUYS
DISTRICT OFFICE

SPECIAL
PROJECTS

CLERICAL
POOL

AIM & CENTRALIZED
SPECIALTY
INSPECTIONS

GENERAL CODE
ENFORCEMENT
INSPECTIONS:
CENTRAL, NORTH, &
SOUTH REGIONS

ADMINISTRATIVE
SERVICES

MANAGEMENT
INFORMATION
SYSTEMS

FINANCIAL
SERVICES

TRAINING AND
EMERGENCY
MANAGEMENT

SUBJECT
SPECIALTY CALL
GROUP

OCTOBER 16, 2009

Chart 2

ENGINEERING BUREAU
IFA KASHEFI, Chief
 (213) 482-0440
LINCOLN LEE, Asst. Chief
 (213) 482-0440
 Fax (213) 482-0450

SPECIAL PROJECTS
Martin Fragosa
 (213) 482-6869
 Fax (213) 482-0450

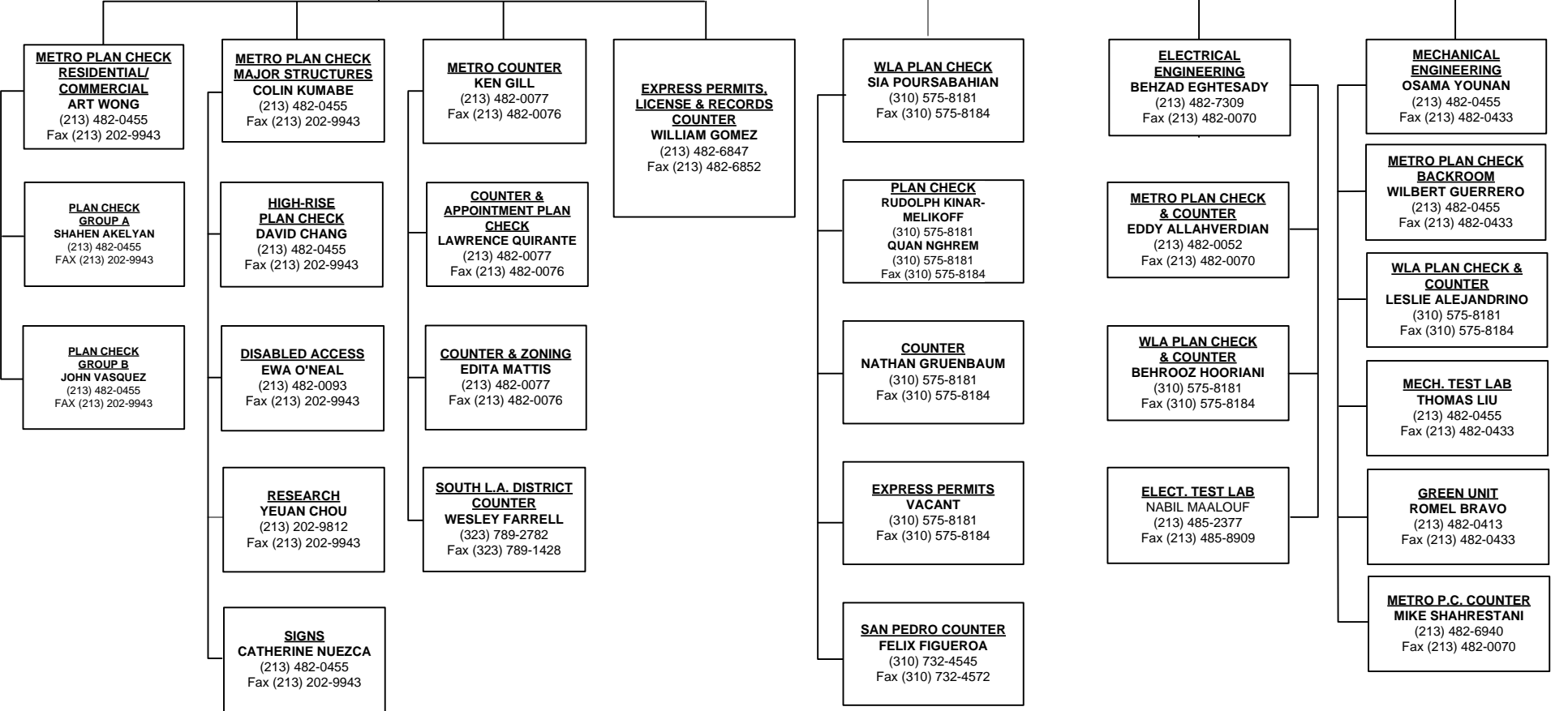
ENGINEERING PLAN CHECK DIVISION

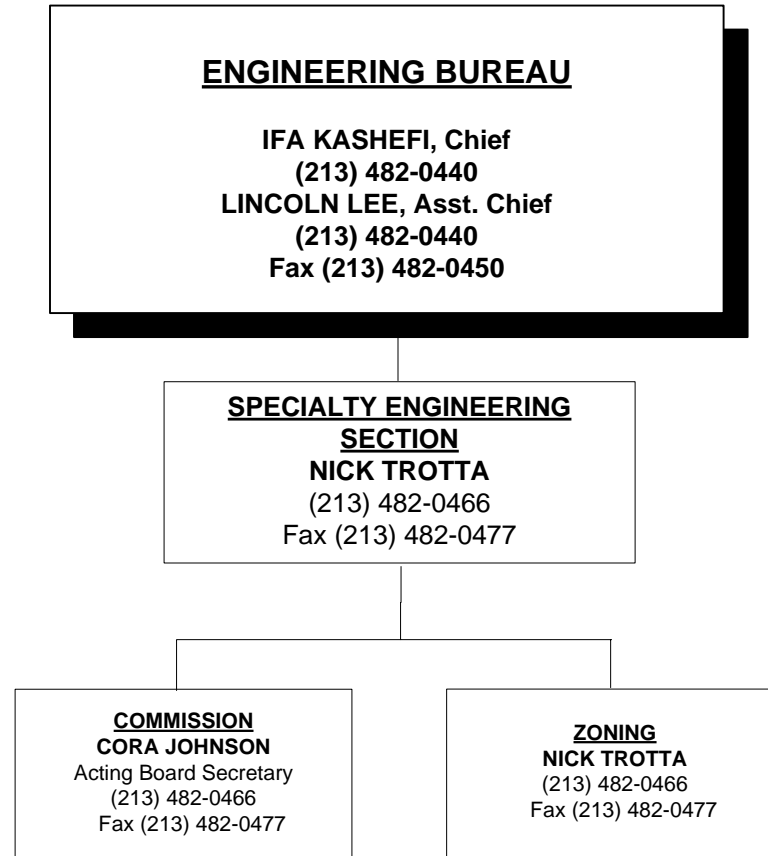
**STRUCTURAL
ENGINEERING SECTION**

WLA OFFICE MANAGER
SIA POURSAHAHIAN
 (ACTING OFFICE MANAGER)
 (310) 575-8181
 Fax (310) 575-8184

**ELECTRICAL
ENGINEERING SECTION**

**MECHANICAL
ENGINEERING SECTION**





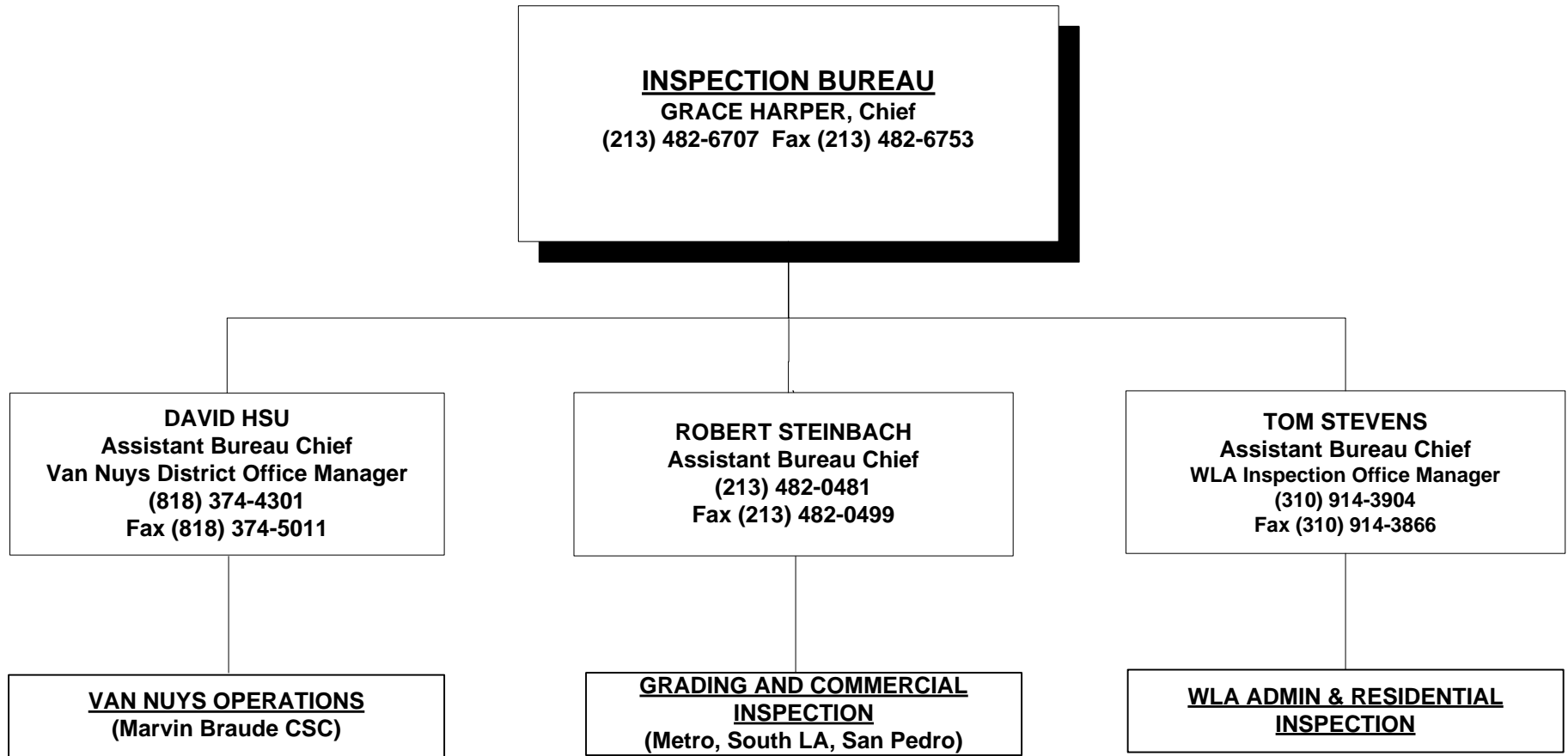
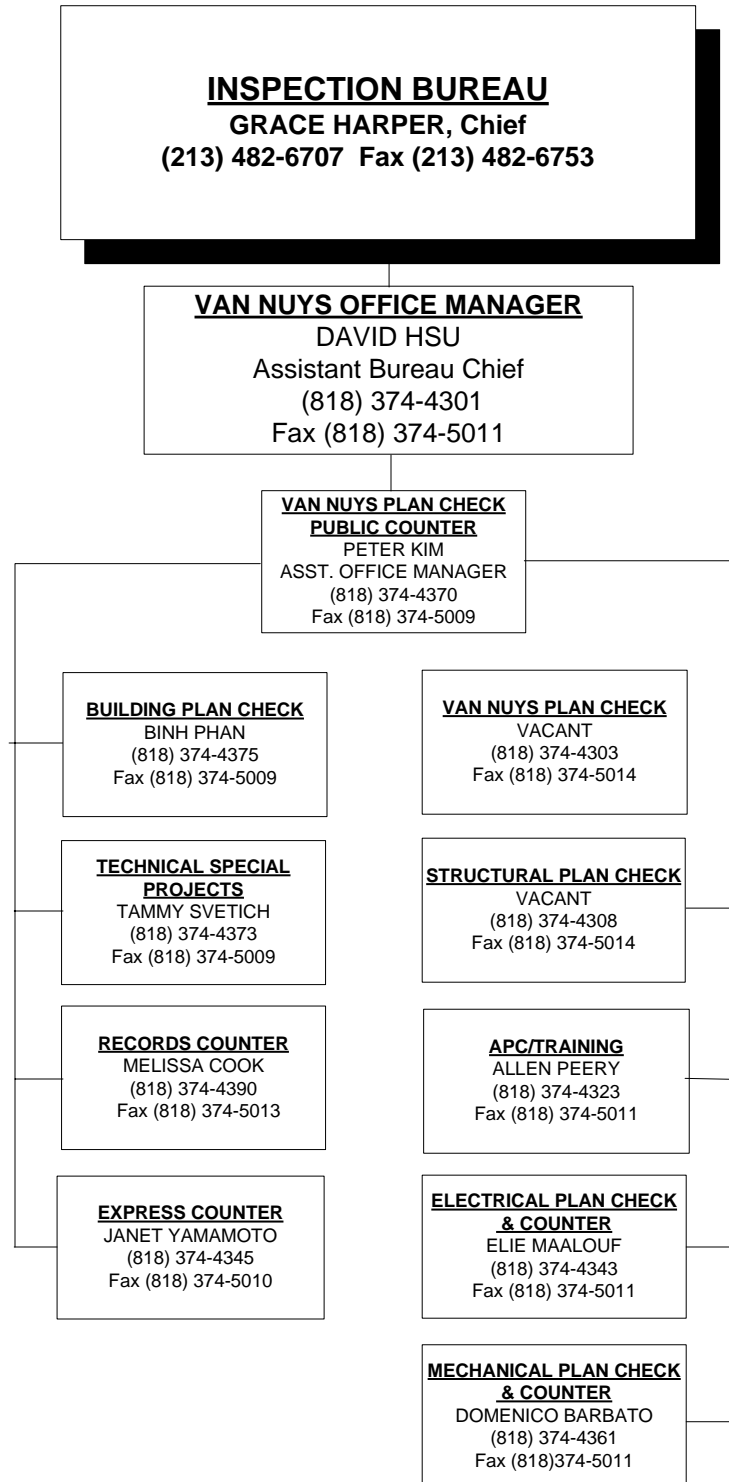


Chart 5



INSPECTION BUREAU

GRACE HARPER, Chief
(213) 482-6707
Fax (213) 482-6753

Chart 6

GRADING AND COMMERCIAL INSPECTION

ROBERT STEINBACH
Assistant Bureau Chief
(213) 482-0481
Fax (213) 482-0499

GRADING
See Chart #7

BUILDING INSPECTION

LARRY GALSTIAN, Chief
(213) 482-0342
Fax (213) 482-0303

SPECIALTY INSPECTION

RICHARD FORTMAN, Prin.
(213) 482-0545
Fax (213) 482-7318

MATERIALS CONTROL

AKBER KHAN
(213) 482-0389
Fax (213) 482-7318

**SPECIAL EVENTS/
TENT INSPECTIONS**

RON SKARIN, Prin.
(213) 482-0387
Fax (213) 482-7318

**HIGH RISE RETROFIT/
EQ INSPECTION**

JOHN KELLY
(213) 482-0392
Fax (213) 482-7318

**METRO/WLA/SP
INVESTIGATIONS**

JOHN KELLY
(213) 482-0392
Fax (213) 482-7318

**VAN NUYS
INVESTIGATIONS**

GREGG STEPHENS
(818) 374-9865
Fax (818) 374-9813

METRO INSPECTION

MICHAEL MARTIN, Prin.
(213) 482-0309
Fax (213) 482-0331

VAN NUYS

PERRY SINGERMAN, Prin.
(818) 374-1104
Fax (818) 374-1113

SAN PEDRO

MICHAEL MISCHLICH
(310) 732-4553
Fax (310) 732-4564

**PLUMBING/HEATING
FIRE SPRINKLER INSPECTION**

MICHAEL THARPE, Chief
(213) 482-0338
Fax (213) 482-0331

**PLUMBING/HEATING
FIRE SPRINKLER INSPECTION**

KIM ARTHUR, Prin.
(213) 482-0356
Fax (213) 482-0331

**PLUMBING INFORMATION
PUBLIC COUNTER**

MANUEL ZEVALLOS
(213) 482-0061
Fax (213) 482-0331

PLUMBING INSPECTION

RUSS ITO
(213) 482-0351
Fax (213) 482-0331

HTG/REFRIG. INSPECTION

DENVER (SHAWN) HARGIS
(213) 482-0354
Fax (213) 482-0331

FIRE SPRINKLER INSPECTION

STAN ANGELOTTI
(213) 482-0357
Fax (213) 482-0331

SEISMIC GAS SHUT-OFF VALVE

MARK CASEY
(213) 482-0345
Fax (213) 482-0331

ELECTRICAL INSPECTION

PATRICK GILBERT, Chief
(213) 482-0341
Fax (213) 482-0303

ELECTRICAL INSPECTION

DAVID MACLEAN, Prin.
(213) 482-0377
Fax (213) 482-0304

**ELECTRICAL INFORMATION
PUBLIC COUNTER**

RAY LEWIS
(213) 482-0057
Fax (213) 482-0331

VAN NUYS

DAVE MACLEAN
(818) 374-1106
Fax (818) 374-1113

WEST L.A.

JERRY NAPIER
(310) 914-3940
Fax (310) 914-3865

SAN PEDRO

MIKE PACKARD
(310) 732-4549
Fax (310) 732-4564

**ELEVATOR/
PRESSURE VESSEL**

PETER CALLAS, Chief
(213) 202-9831
Fax (213) 202-9922

ELEVATOR INSPECTION

BARRY FRIESEN
(213) 202-9830
Fax (213) 202-9922

**ELEVATOR CODE
INFORMATION &
APPOINTMENTS**

(213) 202-9844
Fax (213) 202-9922

ELEVATOR INSPECTION WLA

BERNARDO PEREZ
(310) 914-3970
Fax (310) 914-3866

ELEVATOR INSPECTION VN

ANTONIO MARINI
(818) 374-1147
Fax (818) 374-1113

**PRESSURE VESSEL INSPECTION
CODE DESK METRO**

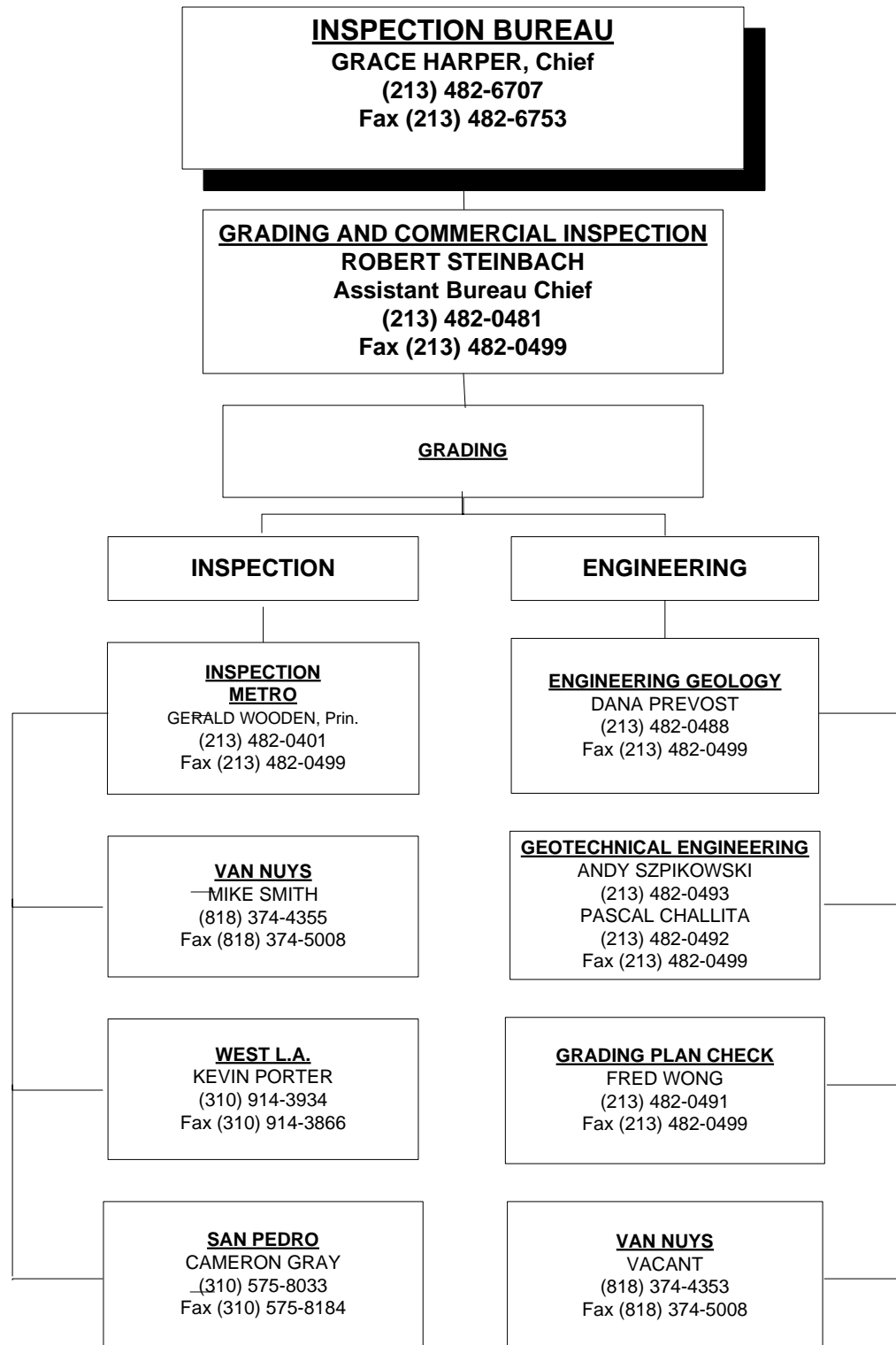
JOVIE ACLARO
(213) 202-9833
Fax (213) 202-9922

**PRESSURE VESSEL INSPECTION
CODE DESK WLA/VN**

WILLIAM BAYNTON
(818) 374-1149
Fax (818) 374-1113

OCTOBER 16, 2009

Chart 7



INSPECTION BUREAU

GRACE HARPER, Chief
(213) 482-6707
Fax (213) 482-6753

Chart 8

WEST LA INSPECTION OFFICE MANAGER

TOM STEVENS
Assistant Bureau Chief
(310) 914-3904
Fax (310) 914-3866

WLA PUBLIC COUNTER

(310) 914-3882
Fax (310) 914-3864

RESIDENTIAL INSPECTION

TODD BORZI
(213) 252-3076
Fax (213) 252-3012

METRO

BRAD NEIGHBORS, Prin.
(213) 252-3068 Fax (213) 252-3012

VAN NUYS

VACANT, Prin.
(818) 374-1155 Fax (818) 374-1113

WEST L.A./SAN PEDRO

JOHN HYDE, Prin.
(310) 914-3905 Fax (310) 914-3866

CD #4

3550 Wilshire Blvd.
MIKE FAUNCE
(213) 252-3025
Fax (213) 252-3012

CD #5C

3550 Wilshire Blvd.
DARREL BRASSFIELD
(213) 252-3075
Fax (213) 252-3012

CD #2

6262 Van Nuys Blvd.
TONY GIANNINI
(818) 374-1159
Fax (818) 374-1113

CD #5B

6262 Van Nuys Blvd.
VACANT
(818) 374-1157
Fax (818) 374-1113

CD #5A

11620 Wilshire Blvd. #1100
STEVE BAXTER
(310) 914-3902
Fax (310) 914-3866

CD #5D

11620 Wilshire Blvd. #1100
DAVID HUANG
(310) 914-3907
Fax (310) 914-3866

CD #8 & #9

3928 S. Figueroa St. #201
REINALDO SANCHEZ
DOMINIC DANERI
(213) 485-7283
Fax (213) 485-8499

CD #10 & #13

3550 Wilshire Blvd.
GREGORY VOLPE
(213) 252-3065
Fax (213) 252-3012

CD #3

19040 Vanowen St.
PAUL CHOPP
(818) 756-8601
Fax (818) 756-9123

CD #7A

6262 Van Nuys Blvd.
PAUL PEARSON
(818) 374-1158
Fax (818) 374-1113

CD #11A

11620 Wilshire Blvd. #1100
PAUL BECKER
(310) 914-3908
Fax (310) 914-3866

CD #6A

11620 Wilshire Blvd. #1100
VINCENT COTTON
(310) 914-3909
Fax (310) 914-3866

CD #14A

2035 Colorado Blvd.
GERALD GOODMAN
(213) 485-3386
Fax (213) 485-8490

CD #14B

4815 Valley Bl. #F
RUSS KELLY
(213) 847-1471
Fax (213) 847-1464

CD #3B

19040 Vanowen St.
MARTIN TACK
(818) 756-4068
Fax (818) 756-9123

CD #7B

6262 Van Nuys Blvd.
SAM IN
(818) 374-1180
Fax (818) 374-1113

CD #6B

11620 Wilshire Blvd. #1100
CHARLES BOGHOSKHAN
(310) 914-3920
Fax (310) 914-3866

CD #15

638 S. Beacon St.
CAMERON GRAY
(310) 732-4545
Fax (310) 732-4564

CD #6

19040 Vanowen St.
JACK UPCHURCH
(818) 756-9991
Fax (818) 756-8075

CD #12A

18911 Nordhoff St., #38A
ROGER WOODLAND
(818) 756-7525
Fax (818) 756-9443

CD #12B

18911 Nordhoff St., #38A
JOHN KENNEDY
(818) 756-8960
Fax (818) 756-9443

CODE ENFORCEMENT BUREAU
HECTOR BUITRAGO, Chief
(213) 252-3902
Fax (213) 252-3911
FRANK BUSH, Asst. Chief
(213) 252-3904
Fax (213) 252-3911

CLERICAL POOL
FAITH MAULUPE
(213) 252-3376
Fax (213) 252-3911

CENTRALIZED SPECIALTY
VACANT
(213) 252-3930
Fax (213) 252-3911

CITYWIDE NUISANCE ABATEMENT PROGRAM
DAVID VACCARO
(213) 252-3931
Fax (213) 252-3912

CENTRALIZED INSPECTION
FRANK LARA
(213) 252-3932
Fax (213) 252-3013

SPECIAL PROJECTS
LUKE ZAMPERINI
(213) 252-3310
Fax (213) 252-3911

CONTRACT NUISANCE ABATEMENT
ALEXANDER MOFFAT (213) 252-3962
Fax (213) 252-3912

PROACTIVE CODE ENFORCEMENT
ELDON KEY (213) 252-3349
TIM O'CONNOR (213) 252-3349
MARTY WEIGHT (213) 252-3346
Fax (213) 252-3013

OFF-SITE SIGN PERIODIC INSPECTION PROGRAM (OSSPIP)
DEAN STARON
(213) 252-3396
Fax (213) 252-3013

PROBLEM PROPERTY RESOLUTION TEAM
GENE DIORIO
(213) 252-3967
Fax (213) 252-3912

SIGN ENFORCEMENT
THOMAS HUERTA
(213) 252-3082
Fax (213) 252-3013

ABANDONED BUILDING TASK FORCE
MARSHALL RUMPF
(213) 252-3974
Fax (213) 252-3912

NUISANCE ABATEMENT REVOCATION
VACANT
(213) 252-3965
Fax (213) 252-3912

CODE ENFORCEMENT BUREAU
HECTOR BUITRAGO, Chief
(213) 252-3902
Fax (213) 252-3911
FRANK BUSH, Asst. Chief
(213) 252-3904
Fax (213) 252-3911

Chart 10

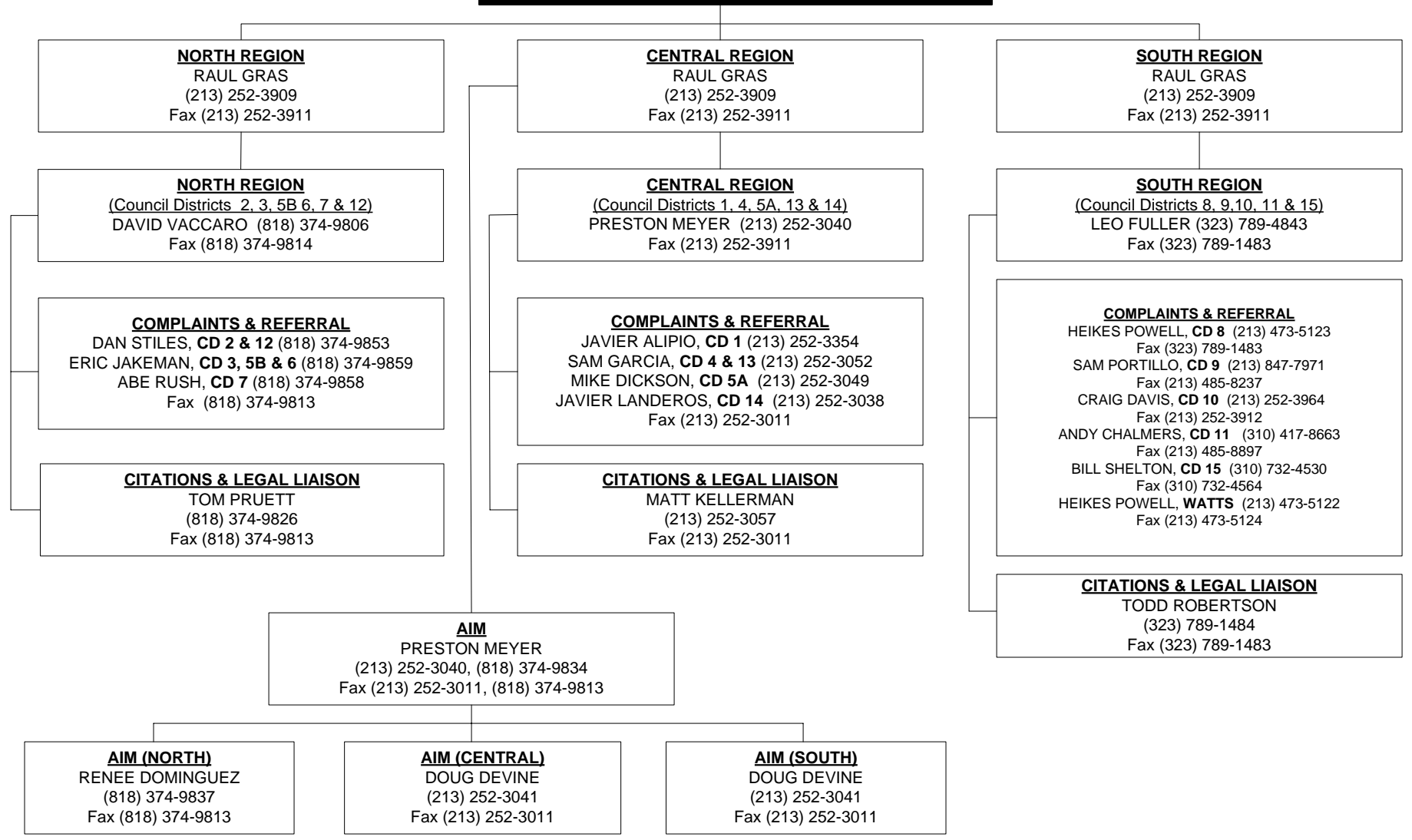
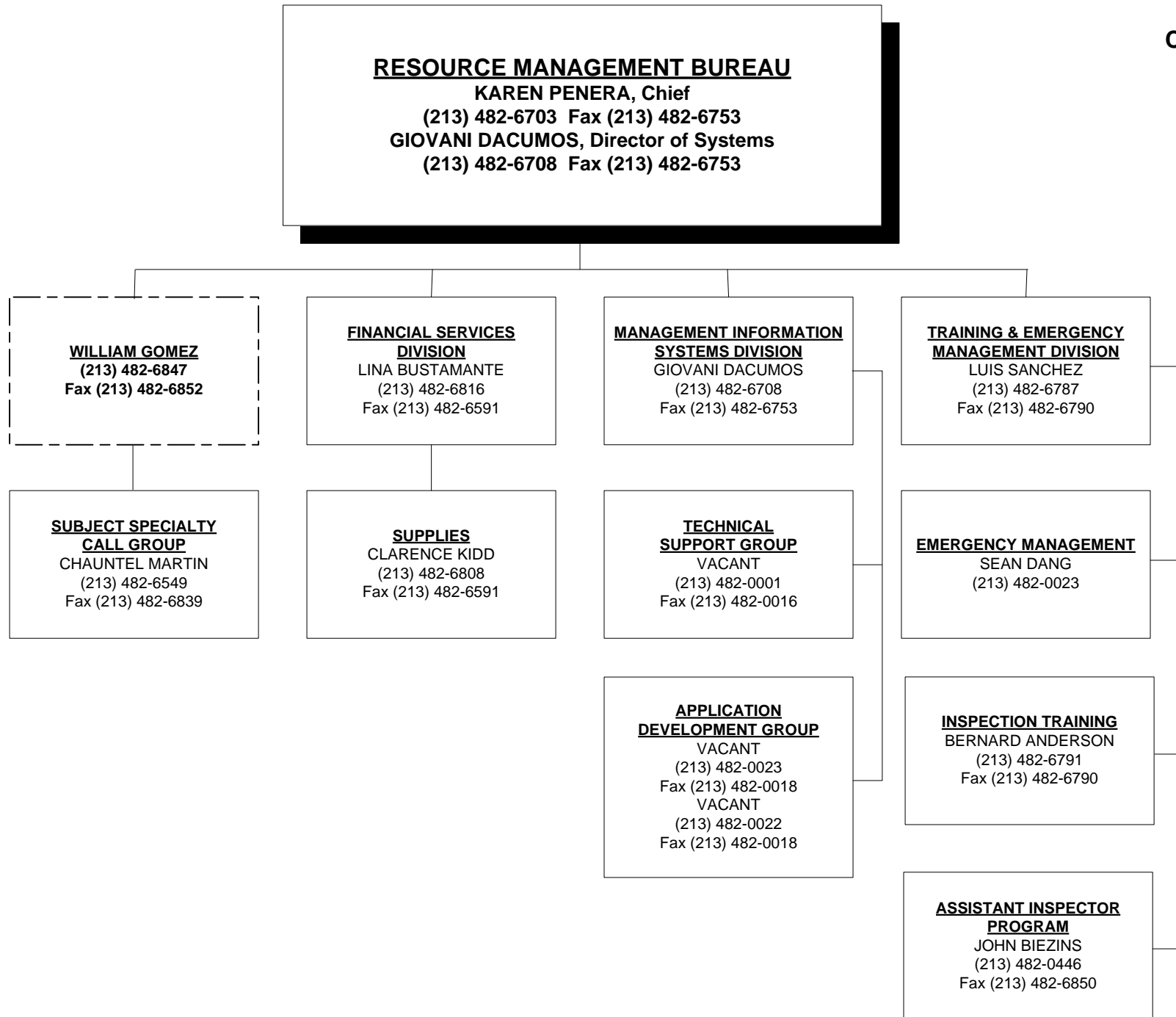


Chart 11



RESOURCE MANAGEMENT BUREAU

KAREN PENERA, Chief
(213) 482-6703 Fax (213) 482-6753
GIOVANI DACUMOS, Director of Systems
(213) 482-6708 Fax (213) 482-6753

ADMINISTRATIVE SERVICES DIVISION

VACANT, Chief
(213) 482-6731
Fax (213) 482-6733

**RISK AND RECORDS
MANAGEMENT**

TERE ABRAHAM
(213) 482-6766
Fax (213) 202-9929

CUSTODIAN OF RECORDS

(213) 482-6770
Fax (213) 202-9929

DATA AND RECORDS MANAGEMENT

CAROL MING
(213) 482-6757
Fax (213) 482-6889

RESIDENTIAL PROPERTY REPORTS

JERRILYN HORTON
(213) 482-6758
Fax (213) 482-6889

PERSONNEL SERVICES

GINA TERVALON
(213) 482-6720
Fax (213) 482-6733

SEAN CUMBIE
(213) 482-6730
Fax (213) 482-6733

PERSONNEL RECORDS

MARIA BERUMEN
(213) 482-6722
Fax (213) 482-6733

HOSIE THOMAS
(213) 482-6728
Fax (213) 482-6733

**BUDGET & ADMINISTRATIVE
SUPPORT**

JULIE DUNCAN
(213) 482-6739
Fax (213) 482-6754

LAN BANH
(213) 482-6740
Fax (213) 482-6754

MARY ANN YAMAMOTO
(213) 482-6741
Fax (213) 482-6754

