



Environmental Protection

through proper Medical Waste Management

Richard Landon, R.E.H.S.
Environmental Scientist with
Department of Health Services

June 4, 2002



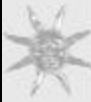
Objectives

- ★ State Regulated Medical Waste Management
- ★ Medical Waste vs Non Medical Waste
- ★ Different Types of Medical Waste Streams
- ★ Treated Medical Waste
- ★ Treatment Facilities and Transfer Stations
- ★ Home Generated Non-Medical Waste



Definitions

- ★ Pathology Waste
- ★ Chemotherapy Waste
- ★ Pharmaceutical Waste
- ★ Biohazardous Waste
- ★ Sharps Waste



Regulated Medical Waste Generators

- * Hospitals
- * Laboratories
- * Dental Office
- * Medical Clinic
- * Surgery Centers
- * Veterinarians
- * Morgues & Funeral Homes
- * Trauma Scene Waste Practitioners





Typical Waste Streams

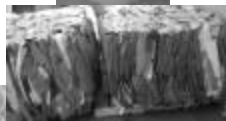
- * Biohazardous Waste
- * Sharps Waste
- * Pathology Waste
- * Trace Chemotherapy Waste





Typical Waste Streams, (cont'd)

- * Pharmaceutical Waste
- * Solid Waste including Organic Waste, Paper, and Treated Medical Waste
- * Radioactive Waste
- * Hazardous Waste





Waste Management Practices

- ★ Steam Sterilization
- ★ Microwave Sterilization
- ★ Incineration



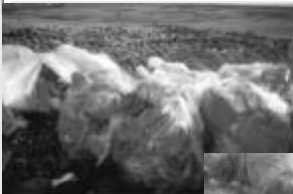


Waste Management Practices



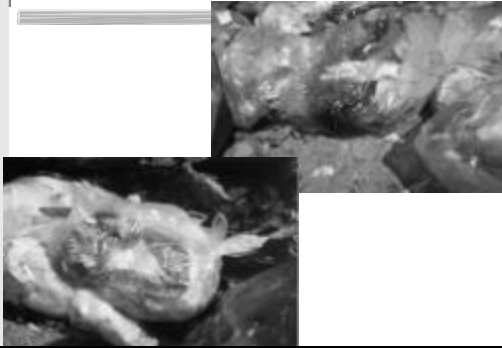


Treated Medical Waste





Untreated Medical Waste





Home-Generated Sharps Waste

★ HSC sec. 117670
“Household waste” means any material including garbage, trash, and sanitary wastes in septic tanks and medical waste, that is derived from household, farms, or ranches. Household waste does not include trauma scene waste.



Home-Generated Sharps Waste





For More Information

Contact:

Richard Landon (213) 977-7370, or
rlandon@dhs.ca.gov

Cathy Harrison (213) 977-7380, or
charriso@dhs.ca.gov

Ron Pilorin (916) 324-6999, or
rpilorin@dhs.ca.gov

Visit:

<http://www.dhs.ca.gov/MedicalWaste>

<http://www.HospAA.org>
